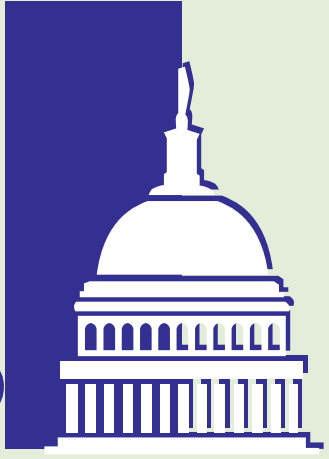


WRAP



The Washington
Regional
Alcohol
Program's
2008
Corporate
Guide to Safe
Celebrating
and Safe
Driving

“A public-private partnership working to prevent drunk driving and underage drinking in the Washington-metropolitan region.”

Sponsored by
GEICO
geico.com



Table of Contents

Impaired driving is a serious problem both nationally as well as locally in the Washington-metropolitan area where the tragic effects are seen on a daily basis. Communities pay both a human and economic toll for impaired driving and therefore should take the lead in solving this problem. Partnerships within a community are essential components to making the effective combination of law enforcement, public information, education and advocacy. Employers are key partners in the battle to keep the Greater Washington roads safe. During the holidays and throughout the year, use WRAP's guide as a resource to stay safe all year long.

Published April 2008

Washington Regional Alcohol Program
1420 Spring Hill Road
Suite 250
McLean, VA 22102
Phone: (703) 893-0461
Fax: (703) 893-0465
Email: wrap@wrap.org
URL: www.wrap.org

Washington Regional Alcohol Program	2
Community Programs and Initiatives	3
High Costs to Businesses	4
Taking A Stand	5
Regional DUI/DWI Arrests	6
Alcohol/Drug-Related Vehicular Fatalities	7
Local Drunk Driving Laws and Consequences	8-9
Impaired Driving Fact Sheet	10
A High Price to Pay	11
Tips for Safe Celebrating	12

Washington Regional Alcohol Program



Founded in 1982, the **Washington Regional Alcohol Program** is an award-winning, public-private partnership working to prevent drunk driving and underage drinking in the Washington D.C. metropolitan region. Through public education, innovative health education programs and advocacy, WRAP is credited with keeping the percentage of Washington-metropolitan area's alcohol-related traffic deaths consistently lower than the national average. Area residents, however, may best know WRAP via the organization's popular free cab ride service for would-be drunk drivers, *SoberRide*®.

2

Community Programs and Initiatives

The Washington Regional Alcohol Program (WRAP) offers a vast array of services to fight impaired driving in the Washington-metropolitan area. The following are some of the programs and services we provide.

SoberRide® (www.soberride.com)

WRAP's *SoberRide*®, one of the nation's most successful free cab ride programs for would-be impaired drivers, has helped to ensure Washington-metropolitan area residents have a safe way home on high-risk holidays. Since 1993 alone, 40,626 safe rides home have been provided to would-be impaired drivers.

Currently, *SoberRide*® operates during the December/January holiday season, St. Patrick's Day, Independence Day and Halloween. During these high-risk holidays, callers, age 21 and over, may receive a free cab ride home (up to \$50) by calling (800) 200-TAXI or #TAXI for AT&T users.

Visit **www.SoberRide.com** for details and running times.

Safe And Vital Employees (SAVE)

This business/military outreach program brings traffic safety right into the workplace. Through SAVE, WRAP talks directly to employees and military personnel about the physical, economic and legal consequences of impaired driving. Additionally, WRAP provides guidelines for safe celebrating and the reduction of alcohol-induced risky behaviors.

The goal of the program is to keep employees and military personnel safe, healthy and productive while helping to reduce health insurance, workers' compensation costs and other related expenses. To help capture the attention of the employees and add credibility to the effort, WRAP works closely with area police departments and drunk driving victims.

To arrange this no cost, 45-minute, individually customized program, please contact WRAP at (703) 893-0461.

3

*For a more detailed listing of our programs, please visit our web site at **www.wrap.org**.*

High Costs to Businesses

Employers lose billions of dollars annually as a result of on and off the job motor vehicle injuries. This accounts for:

- ◆ Lost work time
- ◆ Insurance premium increases
- ◆ Workers compensation payments
- ◆ Lost productivity
- ◆ Administrative burdens
- ◆ Lowered employee morale
- ◆ Loss of a trained, trusted employee

Many of these injuries occur as a result of impaired driving, and much of this cost could be prevented by the ability to recognize on-the-job warning signs of alcohol and drug abuse. It is important to remember that while these signs can indicate potential substance abuse they are also indicative of other problems and do not constitute a definite diagnosis.

- ◆ Inconsistent work quality
- ◆ Poor concentration
- ◆ Lowered productivity
- ◆ Increased absenteeism
- ◆ Unexplained disappearances from the job site
- ◆ Carelessness, mistakes
- ◆ Errors in judgment
- ◆ Needless risk-taking
- ◆ Disregard for safety
- ◆ Regular injuries and accidents on the job
- ◆ Extended lunch periods and early departures
- ◆ Fatigue
- ◆ Frequent financial problems
- ◆ Red and glazed eyes

Information provided by American Academy of Child and Adolescent Psychiatry.

Taking a Stand

Your company can save money and make a difference by taking a stand against impaired driving.

- ◆ Host WRAP's Safe And Vital Employees Program (see page 3) during a brown bag lunch to inform and educate employees on drunk driving laws and consequences.
- ◆ Place check-stuffers in paycheck envelopes containing various elements of the drunk driving information outlined in this guide or contact WRAP for *SoberRide®* materials.
- ◆ Provide support and funding to local police departments for their efforts to reduce drunk driving (i.e. sponsor a sobriety checkpoint).
- ◆ Create an awards program which recognizes employees for their efforts in promoting safe and responsible driving.
- ◆ Send a memo to employees explaining the impaired driving legislation being introduced this year, and encourage them to contact their local elected officials to show their support.

Please feel free to contact WRAP at (703) 893-0461 for further suggestions.



Regional DUI/DWI Arrests

	2005	2006
	DUI/DWI Arrests	DUI/DWI Arrests
District of Columbia	1,807	1,600
Montgomery County, MD	3,559	3,714
Prince George's County, MD	1,927	1,667
Arlington County, VA	574	688
City of Alexandria, VA	425	479
City of Fairfax, VA	268	167
City of Falls Church, VA	34	54
City of Manassas, VA	219	218
City of Manassas Park, VA	110	106
Fairfax County, VA	3,015	2,794
Loudoun County, VA	694	616
Prince William County, VA	1,611	1,794
Regional Total	14,243	13,872

6

Information provided by the Metropolitan Washington Council of Governments.

Alcohol/Drug-Related Vehicular Fatalities

Washington Metropolitan-Area 2006		
	Traffic Fatalities	Alcohol/Drug Related Traffic Fatalities
District of Columbia	41	15
Montgomery County, MD	57	17
Prince George's County, MD	111	30
Arlington County, VA	4	1
City of Alexandria, VA	1	0
City of Fairfax, VA	3	3
City of Falls Church, VA	0	0
City of Manassas, VA	1	0
City of Manassas Park, VA	1	0
Fairfax County, VA	67	24
Loudoun County, VA	19	5
Prince William County, VA	46	22
Regional Total	350	117
National Total	42,642	17,602

7

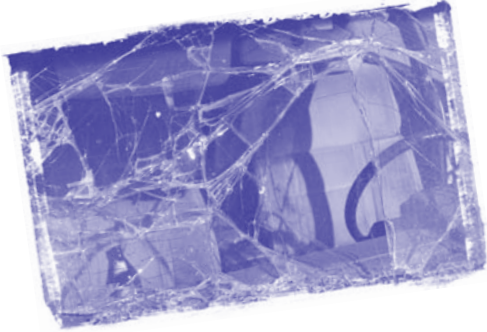
Information provided by the Metropolitan Washington Council of Governments.

Local Drunk Driving Laws & Consequences

Laws	District of Columbia	Maryland	Virginia
Legal Drinking Age	21	21	21
Blood Alcohol Content (BAC) 21 and Over	.08 BAC	.08 BAC for DUI .07 BAC for DWI	.08 BAC
Automatic License Revocation	License can be taken for refusing to take the test or for having a .08 BAC or higher	License can be taken for refusing to take the test or for having a .08 BAC or higher. DUI convictions w/ refusal result in additional up to \$500 fine or 2-month jail sentence.	License can be taken for refusing to take the test or for having a .08 BAC or higher
1st Offense DUI/DWI	Fine: Up to \$300 Jail: Up to 90 days Suspend License: Six months If BAC is .20 to .25: Mandatory minimum five days in jail. If BAC is above .25: Mandatory minimum 10 days in jail	DUI Fine: Up to \$1,000 Jail: Up to a year Revoke License: Six months – 12 points on your license DWI Fine: Up to \$500 Jail: Up to 60 days Suspend License: 60 days – 8 points on your license If BAC is above .15: 90-day license suspension	Fine: \$250 to \$2,500 Jail: Up to a year Revoke License: One year If BAC is .15 to .20: Jail: Mandatory minimum five days in jail. If BAC is above .20: Jail: Mandatory minimum 10 days in jail & mandatory ignition interlock
2nd Offense DUI/DWI	Fine: \$1,000 to \$5,000 Jail: Up to a year Suspend License: One year If BAC is .20 to .25: Mandatory minimum 10 days in jail. If BAC is above .25: Mandatory minimum 20 days in jail	DUI Fine: Up to \$2,000 Jail: Up to two years with a mandatory minimum of 5 days Revoke License: 12 months Suspend License: 1 year, 3-12 months Ignition Interlock period – 12 points on your license – Alcohol abuse assessment and program DWI Fine: \$500 Jail: Up to a year Suspend License: Up to 120 days – 8 points on your license If BAC is above .15: 180-day license suspension	Fine: \$500 to \$2,500 Jail: 1 month to 1 year Revoke License: Three years If BAC is .15 to .20: Mandatory minimum 10 days in jail. If BAC is above .20: Mandatory minimum 20 days in jail & mandatory ignition interlock
3rd Offense DUI/DWI	Fine: \$2,000 to \$10,000 Jail: Up to a year Suspend License: Two years If BAC is .20 to .25: Mandatory minimum 10 days in jail. If BAC is above .25: Mandatory minimum 25 days in jail	DUI Fine: Up to \$3,000 Jail: Up to three years Revoke License: 18 months DWI Fine: Up to \$500 Jail: Up to a year Suspend License: Up to 12 months If BAC is above .15: 180-day license suspension	Fine: \$1,000 to \$2,500 Jail: 6 months to 5 years Revoke License: Indefinitely Mandatory Ignition Interlock Vehicle: Can be seized & forfeited FELONY
8 Adults/Parents Who Aid Minors in Obtaining Alcohol	Fine: \$300 Revoke License: Up to 90 days	First offense: Fine up to \$500 Repeated offenses: Fine up to \$1,000	Fine: \$250 to \$2,500 Jail: Up to a year Drivers License Suspension: Up to one-year for purchasing for underage

Impaired Driving Fact Sheet

- ◆ In the United States in 2006, 17,602 people died and 256,000 people were injured in alcohol-related traffic crashes.
- ◆ On average, one person dies in an alcohol-related traffic crash every 30 minutes.
- ◆ On average, a person is injured in an alcohol-related traffic crash every two minutes.



- ◆ About 3 in every 10 Americans will be involved in an alcohol-related crash at some time in their lives.
- ◆ The highest intoxication rates (.08+) in fatal crashes in 2006 were recorded for drivers 21-24 (33%) and 25-34 years old (29%) followed by ages 35-44 (25%).
- ◆ About one-third of all pedestrians, 16 years of age or older, killed in traffic crashes in 2006 were intoxicated.
- ◆ Alcohol is the single largest cause of fatal crashes. Alcohol related fatalities accounted for 41% of all highway fatalities in 2006.
- ◆ Approximately 1.4 million drivers were arrested in 2005 for driving under the influence of drugs and alcohol. This is an arrest rate of one for every 139 licensed drivers in the United States.

A High Price to Pay

In addition to the legal consequences of a DUI/DWI arrest, it will cost you personally, professionally and economically.

- ◆ You will pay \$5,000-\$20,000 for attorney fees, insurance rate increases, fines, towing, court costs and bonding fees.

*(Information provided by Thomas Jefferson
Community Criminal Justice Board.)*

- ◆ An average DUI/DWI arrest is financially equivalent to:
 - A downpayment on a house
 - A trip to Europe for two
 - 2,200 movie tickets
 - 200 romantic dinners for two
 - 8,000 cups of coffee
- ◆ When filling out a job application, you must say "YES" you have been convicted of a crime.
- ◆ Nine out of ten insurance companies will cancel your policy forcing you to find a high-risk insurance company, which increases your premiums by \$1,000-\$1,500 a year.
- ◆ While a DUI/DWI can be removed from your driving record, it stays on your criminal record for life.



Tips for Safe Celebrating

- ◆ Always serve food with alcohol. High protein foods like meats and cheeses are especially good. They stay in the stomach longer, which slows the rate at which the body absorbs alcohol.
- ◆ If you serve an alcoholic punch, use a non-carbonated base such as fruit juice. The body absorbs alcohol faster when mixed with carbonization.
- ◆ Serve non-alcoholic beverages as an option. It is possible that some of your guests may not want to drink alcohol.
- ◆ Establish guidelines such as:
 - not serving anyone who appears to be impaired.
 - never serving minors.
 - closing the bar at least an hour before the end of the event.
 - offering free rides or cab fare to those who have had too much to drink.
- ◆ Implement a theme to your party so alcohol does not become the single focal point.



SPECIAL THANKS TO:

District of Columbia Department of Transportation
Maryland Highway Safety Office
Virginia Department of Motor Vehicles

WRAP'S 2007 HOLIDAY SAFE DRIVING CAMPAIGN SPONSORS:

Anheuser-Busch Companies
AT&T
Enterprise Rent-A-Car Foundation
GEICO
Giant Food Inc.
Red Top Cab Company
Washington Area New Automobile Dealers Association

**For further information or to order more guides,
please contact us at:**

Washington Regional Alcohol Program
1420 Spring Hill Rd., Suite 250
McLean, VA 22102

Phone: (703) 893-0461 **Fax:** (703) 893-0465

Email: wrap@wrap.org **URL:** www.wrap.org